



Published on *Haala Industries* (<https://www.haala.com>)

[Home](#) > Quick Attach Plates Mini

Quick Attach Plates Mini

\$141.75

Title:

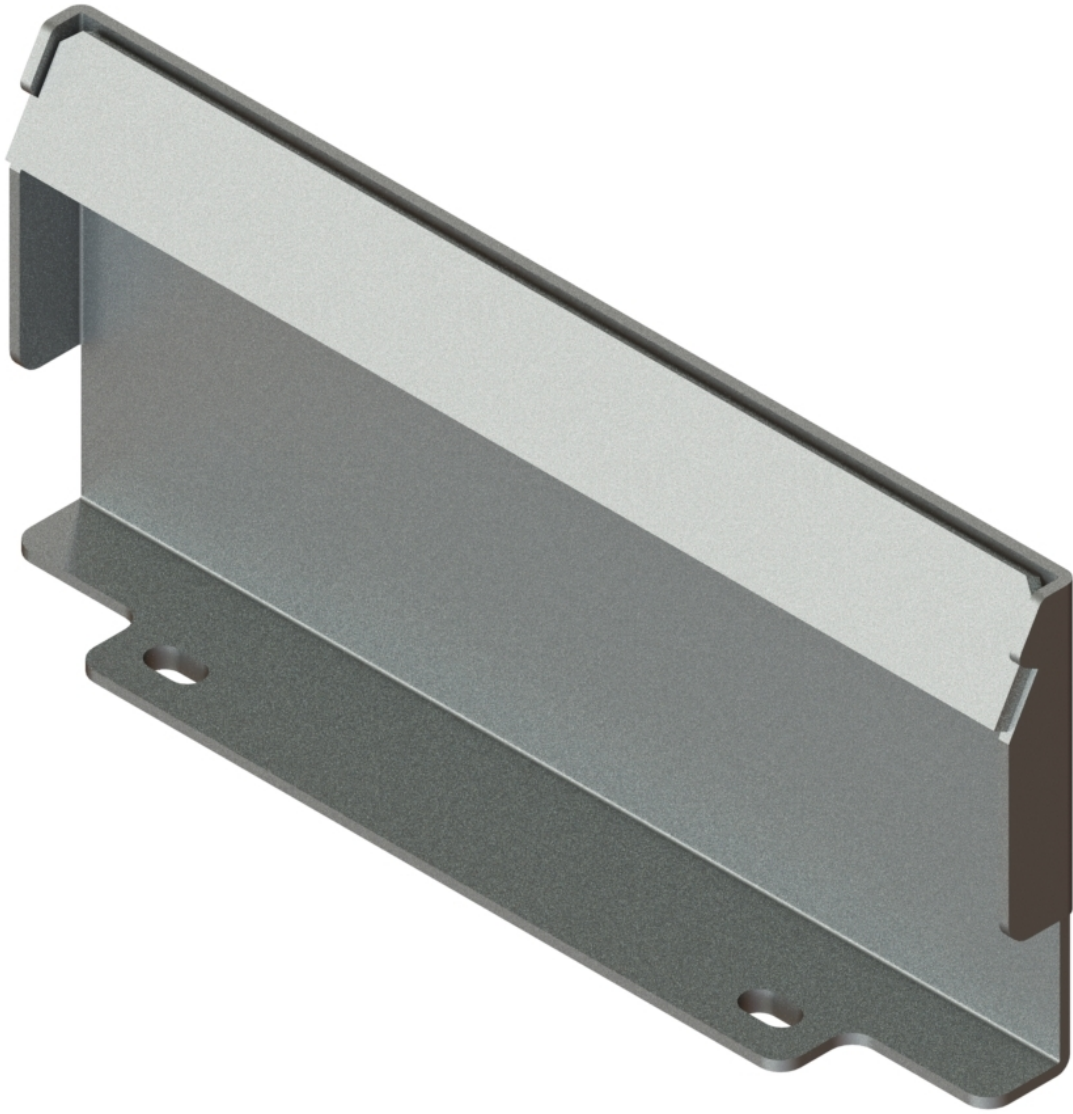
QTMINIA

Part No.

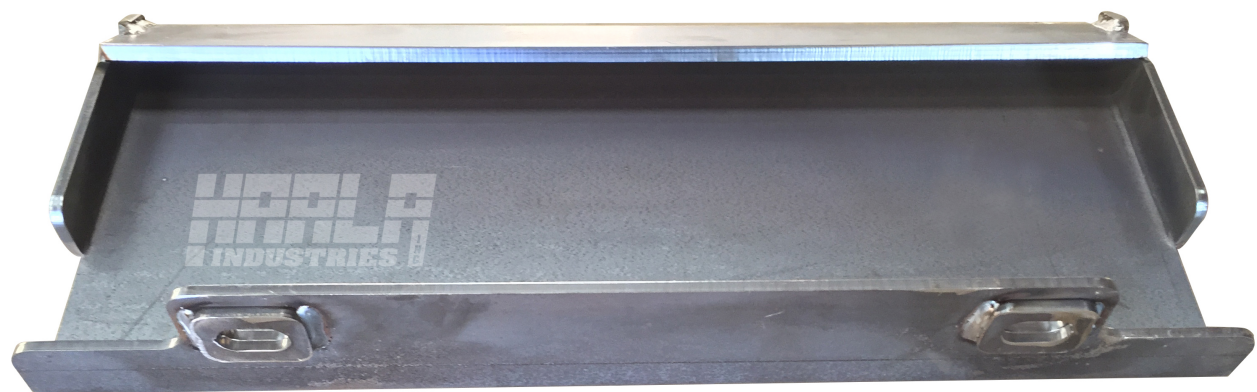
QTMINIA

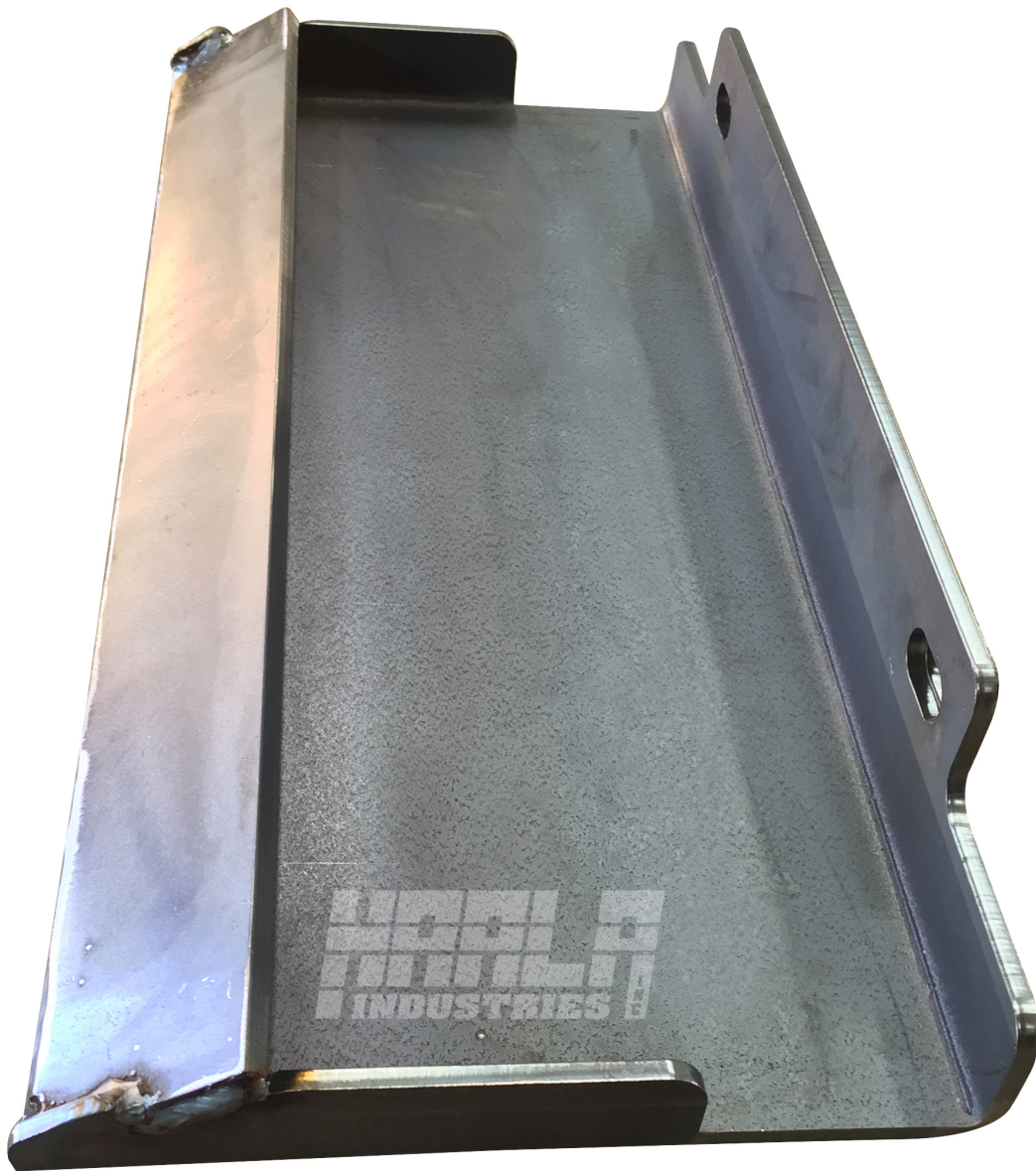
Use this plate to convert your old bucket, or other implement to the Toro style quick attach system or for making your own implement. Simply align this plate onto your implement, weld on and your done! This plate takes the trial and error out of making your implement fit your loader. Designed to fit mini skid steer loaders including Toro Dingo, Ditch Witch, Multi One, Ram Rod, Vermeer, Finn Eagle, Boxer, Thomas and others with Toro style mounting. Will not fit: Bobcat, Kanga Kid or Prodigy.

- Made in the USA with domestic material. Welded by AWS D1.1 certified welders.
- Use this plate to make old attachments compatible with the Toro style quick attach system
- Comes bent and welded, ready to weld to your bucket, forks, tree spade, backhoe, wood splitter, etc.
- Bare metal for easy welding
- Reinforced pin holes









[Contact us for a Quote](#) [1]

Dealer-only purchase:

No

Stock status:

Out of Stock

Free Shipping!

Type:

[Mini Quick Attach Plate](#) [2]

Style:

[No center opening](#) [3]

Thickness:

1/4"

Source URL:<https://www.haala.com/products/quick-attach-plates-mini>

Links

[1] <https://www.haala.com/information-request?list> [2]

<https://www.haala.com/universal-quick-attach-mounting-plates-type/mini-quick-attach-plate> [3]

<https://www.haala.com/universal-quick-attach-mounting-plates-style/no-center-opening>