



Published on *Haala Industries* (<https://www.haala.com>)

[Home](#) > Side Grate Raised

---

## Side Grate Raised

**Title:**

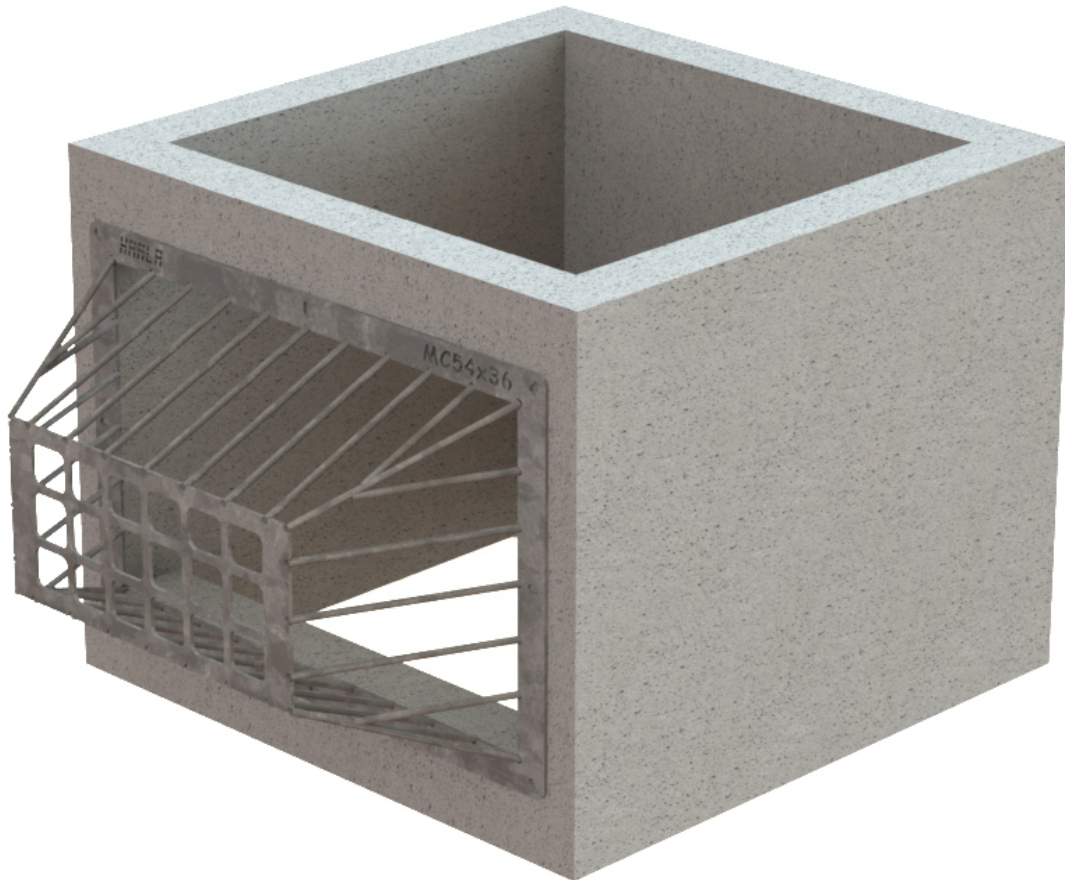
MC42X72

**Part No.**

MC42X72

Raised Side Grates are units designed to cover inlet orifices and prevent medium to large debris from passing through. All grates are made from plate with round bar riser legs. Works well to cover larger openings or multiple small openings.

- Plate and bar hybrid design is both clean and cost effective
- Raised grate design increases flow capacity.
- 3/8" plate with 5/8" round bars
- Typical opening size is 4"
- Mounting flanges on all 4 sides
- Galvanized steel construction. Can be made from aluminum or stainless steel.



Type  ▼

Grate OD  ▼

[Contact us for a Quote](#) [1]

**Physical weight:**

0 lb

**Related products:**

## [Inlet Grates](#) [2]

Plate Thickness  ▼

Select a product  ▼

[Contact us for a Quote](#) [3]

## [Angle Grates For Box Culverts](#) [4]

Plate Thickness  ▼

Select a product  ▼

[Contact us for a Quote](#) [5]

## [Triangle Grates For Box Culverts](#) [6]

Plate Thickness  ▼

Select a product  ▼

[Contact us for a Quote](#) [7]

## [Wedge Anchors for Grates](#) [8]

▼

[Contact us for a Quote](#) [9]

**Physical dimensions:**

0 × 0 × 0 in

**Dealer-only purchase:**

No

**Shipping method:**

[Freight](#) [10]

**Description:**

Side Mount Grate

**Type:**

[Side Mount](#) [11]

**Grate OD:**

[42"x72"](#) [12]

**Grate Height:**

18

**Material:**

[Galvanized Steel](#) [13]

**Plate Thickness:**

3/8"

**Bar Thickness:**

5/8"

**Opening - Web:**

4"

---

**Source URL:**<https://www.haala.com/products/side-grate-raised>

## Links

[1] <https://www.haala.com/information-request?list=MC42X72> [2]

<https://www.haala.com/products/inlet-grates> [3]

<https://www.haala.com/information-request?list=IG121206> [4]

<https://www.haala.com/products/angle-grates-box-culverts> [5]

<https://www.haala.com/information-request?list=AG0606> [6]

<https://www.haala.com/products/triangle-grates-box-culverts> [7]

<https://www.haala.com/information-request?list=TR10265> [8]

<https://www.haala.com/products/wedge-anchors-grates> [9]

<https://www.haala.com/information-request?list=52010> [10]

<https://www.haala.com/shipping-method/freight> [11]

<https://www.haala.com/box-culvert-grates-top-and-side-mount-type/side-mount> [12]

<https://www.haala.com/box-culvert-grates-top-and-side-mount-grate-od/42x72> [13]

<https://www.haala.com/box-culvert-grates-top-and-side-mount-material/galvanized-steel>