



Published on *Haala Industries* (<https://www.haala.com>)

[Home](#) > Raised Plate Grates

Raised Plate Grates

Title:

RPG1212

Part No.

RPG1212

Raised Plate Grates are designed to cover inlet orifices and prevent small to medium debris from passing through. All grates are made from formed plate and feature integrated mounting flanges.

- Plate design for a clean appearance
- Standard 1.5" openings on front face and 3.5" on top and bottom
- Mounting flanges on 2 sides allows grate to be mounted at floor level inverts
- Galvanized steel construction. Can be made from aluminum or stainless steel.



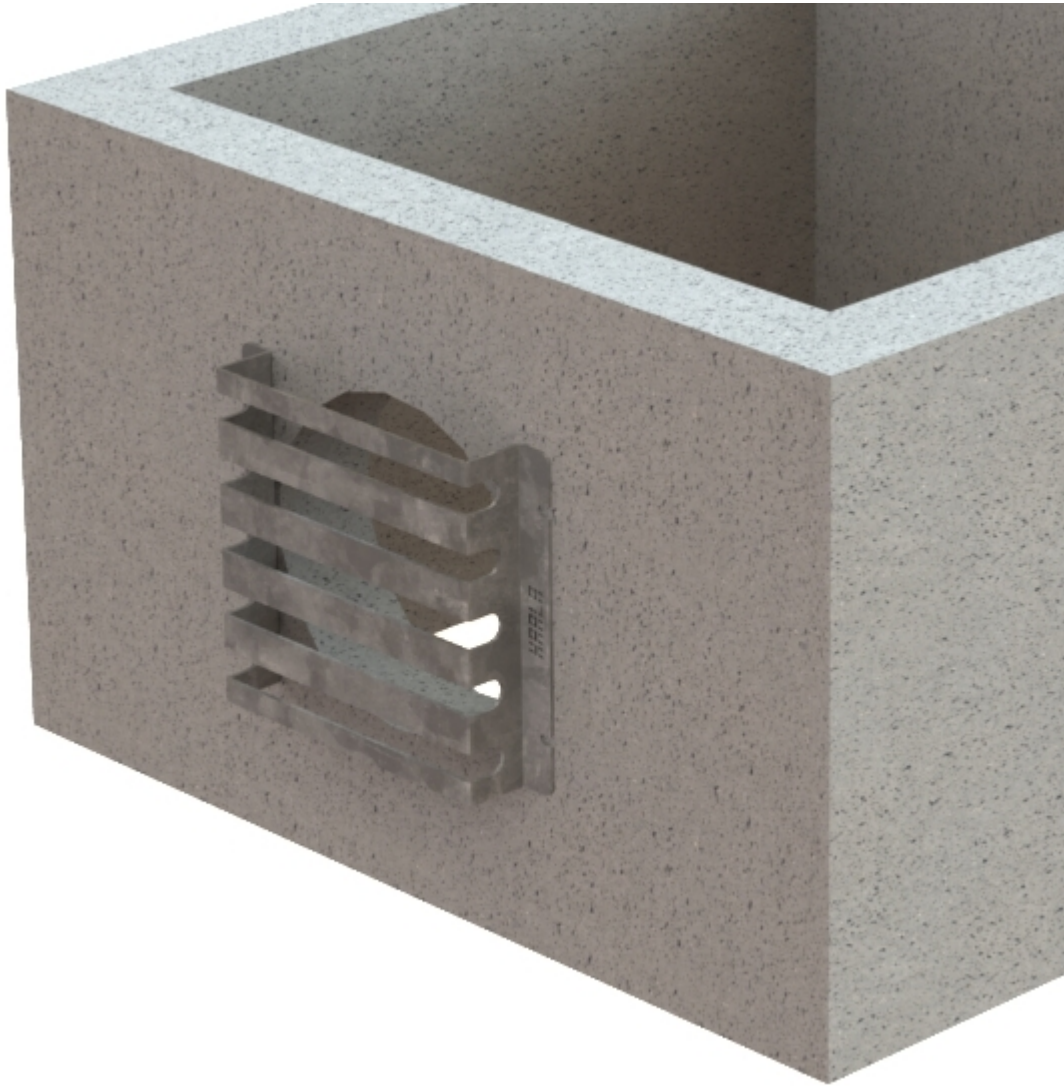


Plate Thickness ▼

Select a product ▼

[Contact us for a Quote](#) [1]

Physical weight:

0 lb

Related products:

[Angle Grates For Box Culverts](#) [2]

Plate Thickness ▼

Select a product ▼

[Contact us for a Quote](#) [3]

[Triangle Grates For Box Culverts](#) [4]

Plate Thickness ▼

Select a product ▼

[Contact us for a Quote](#) [5]

[Inlet Grates](#) [6]

Plate Thickness ▼

Select a product ▼

[Contact us for a Quote](#) [7]

[Wedge Anchors for Grates](#) [8]

▼

[Contact us for a Quote](#) [9]

Physical dimensions:

0 × 0 × 0 in

Dealer-only purchase:

No

Shipping method:

[Freight](#) [10]

Description:

[Raised Plate Grate](#) [11]

Grate Opening:

12"x12"

Plate Thickness:

[1/4"](#) [12]

Opening Size:

1-1/2" slots

Grate OD x HT:

12"x16"x4"

Grate Height:

4

Material:

[Galvanized Steel](#) [13]

Source URL:<https://www.haala.com/products/raised-plate-grates>

Links

[1] <https://www.haala.com/information-request?list=RPG1212> [2]
<https://www.haala.com/products/angle-grates-box-culverts> [3]
<https://www.haala.com/information-request?list=AG0606> [4]
<https://www.haala.com/products/triangle-grates-box-culverts> [5]
<https://www.haala.com/information-request?list=TR10265> [6]
<https://www.haala.com/products/inlet-grates> [7]
<https://www.haala.com/information-request?list=IG121206> [8]
<https://www.haala.com/products/wedge-anchors-grates> [9]
<https://www.haala.com/information-request?list=52010> [10]
<https://www.haala.com/shipping-method/freight> [11]
<https://www.haala.com/box-culvert-side-grates-description/raised-plate-grate> [12]
<https://www.haala.com/box-culvert-side-grates-plate-thickness/14> [13]
<https://www.haala.com/box-culvert-side-grates-material/galvanized-steel>