



Published on *Haala Industries* (<https://www.haala.com>)

[Home](#) > Side Flow Grates

Side Flow Grates

Title:

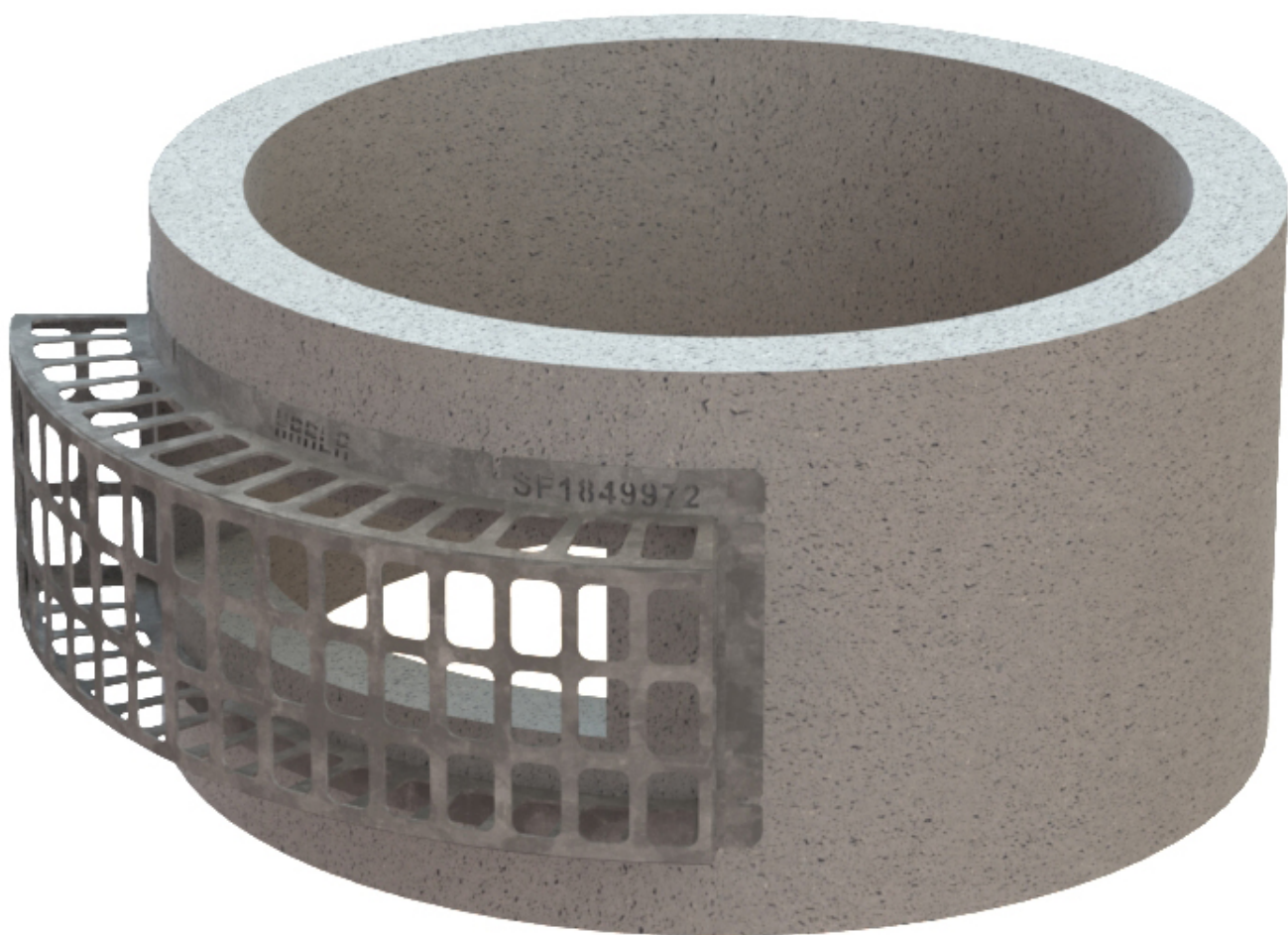
SF1036958

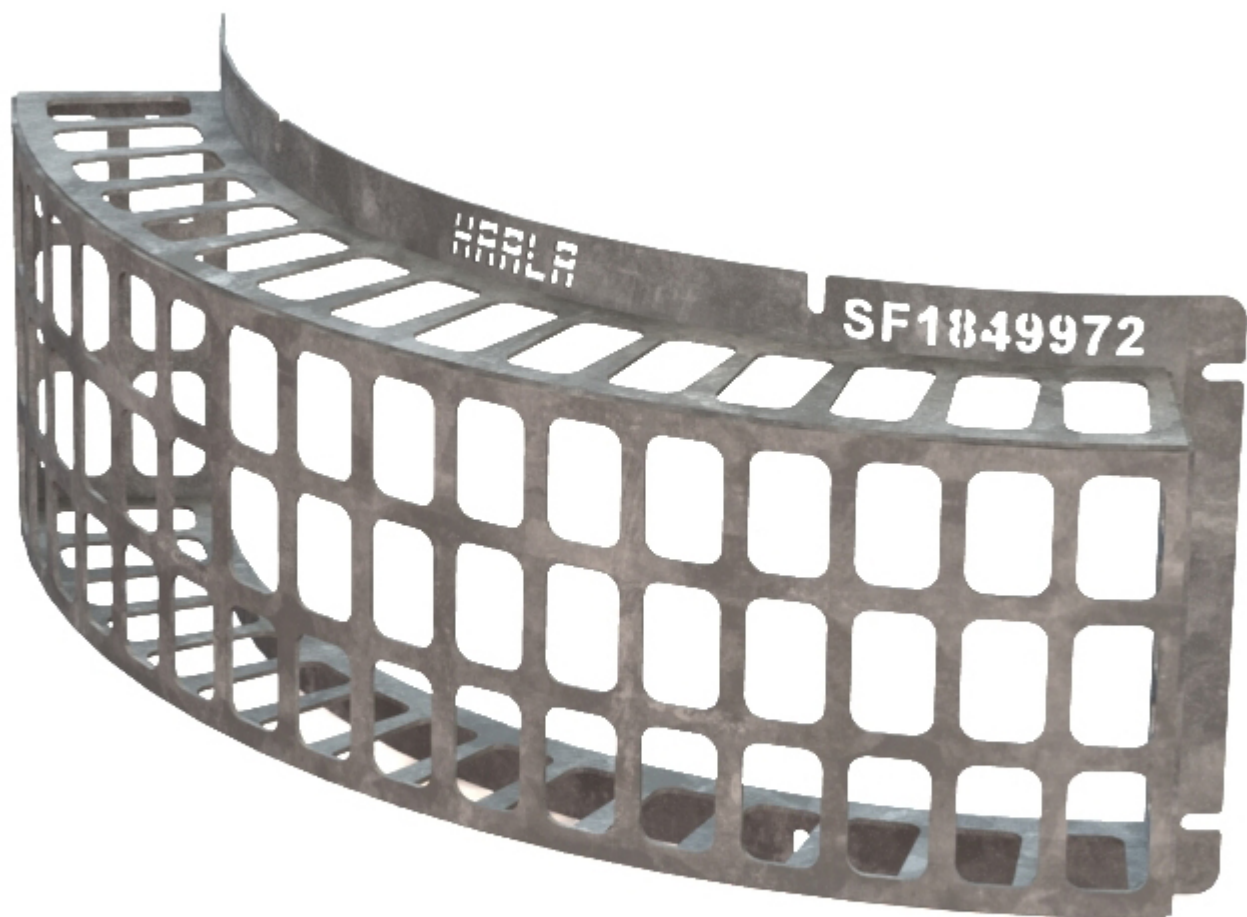
Part No.

SF1036958

Side Flow Grates are designed to cover inlet orifices and prevent medium sized debris from passing through. All grates are made from plate for a clean and smooth contact surface. Also can be made with a flat top flange for mounting at the top edge of manholes when there's a need to cover a weir notch or cutout.

- Plate design for a clean appearance
- Standard 3" wide openings
- Perpendicular offset design for increased filter area
- Mounting flanges on 4 sides
- Galvanized steel construction. Can be made from aluminum or stainless steel.







SF1036958 ▼

[Contact us for a Quote](#) [1]

Physical weight:

75 lb

Physical dimensions:

50 × 18 × 16 in

Dealer-only purchase:

No

Shipping method:

[Standard](#) [2]

New until:

Wednesday, June 29, 2016

Promotion:

Wednesday, June 29, 2016

Thickness:

1/4 inch

Pipe OD:

58

Depth:

9 inch

Grate Opening:

10"x36"

Source URL:<https://www.haala.com/products/side-flow-grates>

Links

[1] <https://www.haala.com/information-request?list=SF1036958> [2]

<https://www.haala.com/shipping-method/standard>