



Published on *Haala Industries* (<https://www.haala.com>)

[Home](#) > Outlet Screens

---

## Outlet Screens

**Title:**

OS12

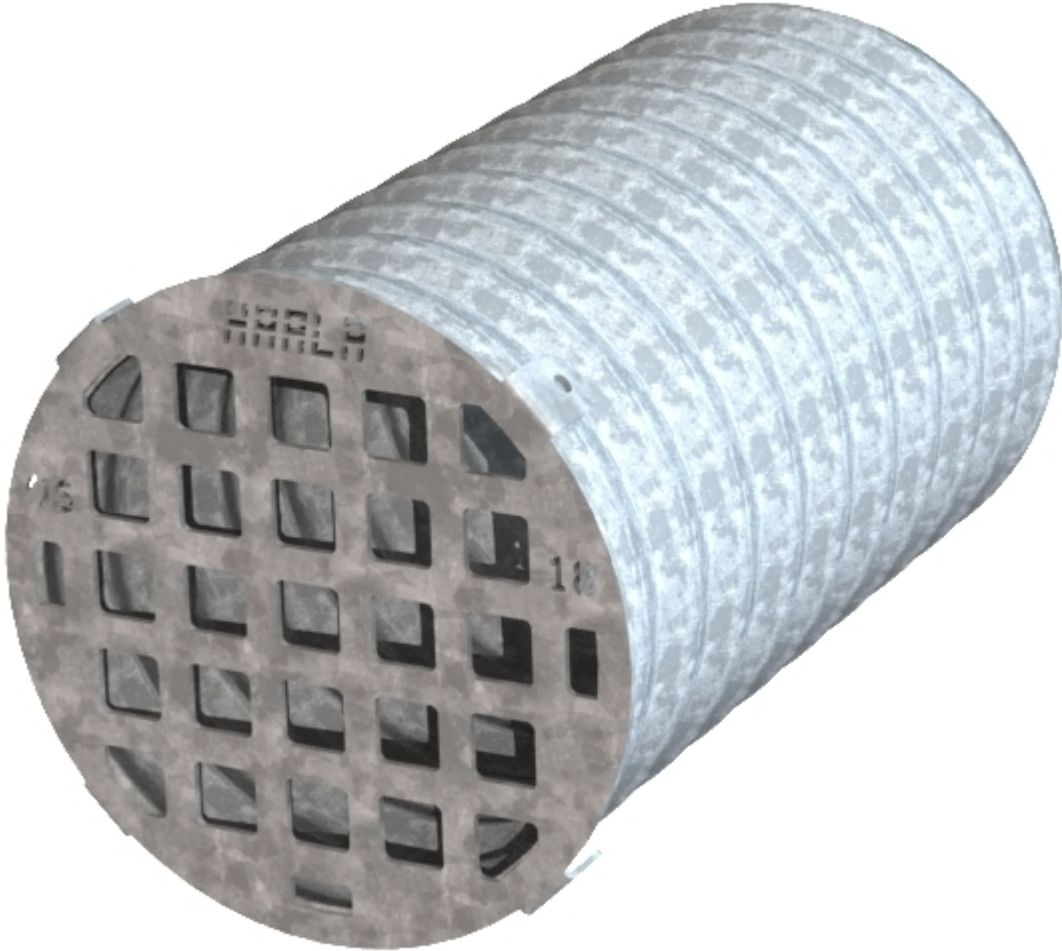
\$146.00

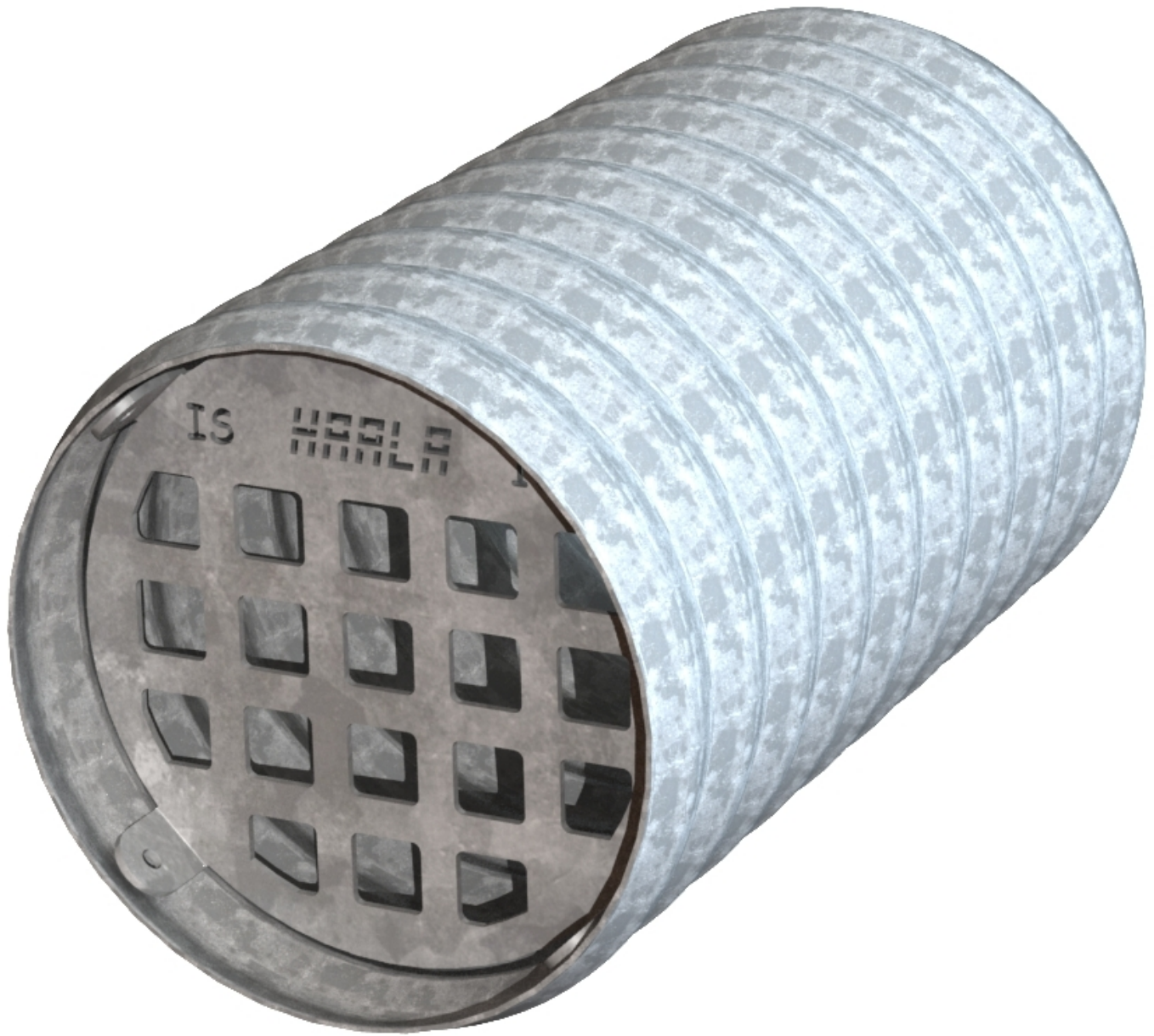
**Part No.**

OS12

Outlet Screens are designed to mount on an inlet or outlet pipe and prevent small debris from passing through. Screens are available as inside or outside mounting. Outside mounts are sized to fit CMP. Inside mounts can be installed in any style of pipe.

- Plate design is durable and clean
- 1/4" plate thickness
- Typical openings are 2" but also available as 1" and custom sizes
- Includes 4 mounting tabs for through bolts or self drilling screws
- Galvanized steel construction. Can be made from aluminum or stainless steel.





OS12 ▼

Add to cart

**Physical weight:**

0 lb

**Physical dimensions:**

0 × 0 × 0 in

**Dealer-only purchase:**

No

**Shipping method:**

[Freight](#) [1]

**Description:**

Pipe Outlet Screen

**Pipe ID:**

[12](#) [2]

**Grate OD:**

[14](#) [3]

**Thickness:**

[1/4"](#) [4]

**Material:**

[Galvanized Steel](#) [5]

---

**Source URL:** <https://www.haala.com/products/outlet-screens>

**Links**

[1] <https://www.haala.com/shipping-method/freight>

[2] <https://www.haala.com/outlet-screens-pipe-id/12>

[3] <https://www.haala.com/outlet-screens-grate-od/14>

[4] <https://www.haala.com/outlet-screens-thickness/14>

[5] <https://www.haala.com/outlet-screens-material/galvanized-steel>