



Published on *Haala Industries* (<https://www.haala.com>)

[Home](#) > Triangle Grates For Manholes

Triangle Grates For Manholes

Title:

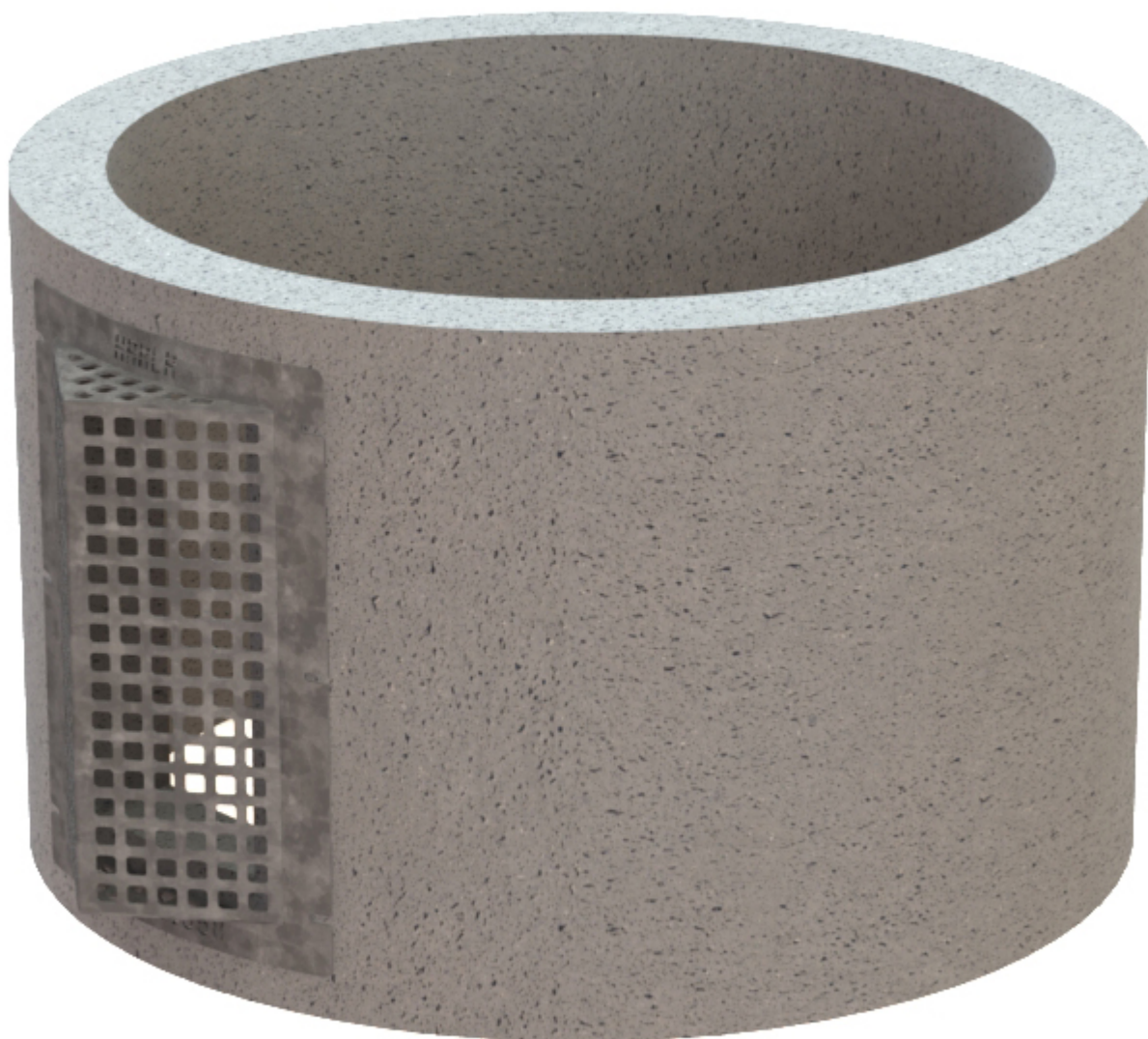
TR1626558

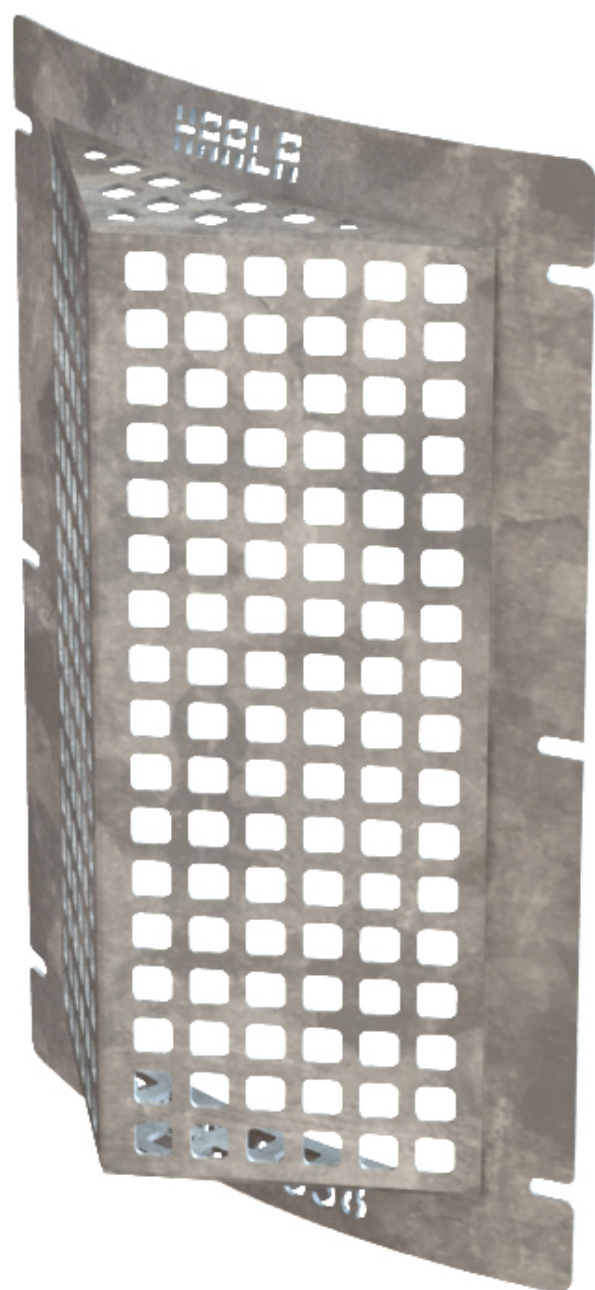
Part No.

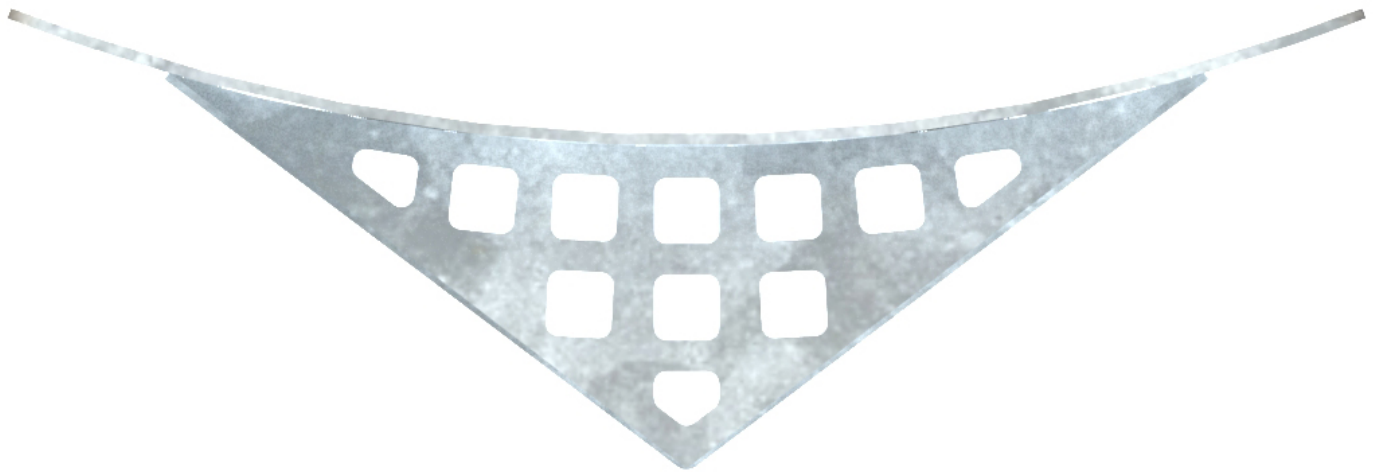
TR1626558

Triangle Grates are designed to cover inlet orifices and prevent small debris from passing through. The raised and angled design helps to deflect debris and increases filter area. All grates are made from plate for a clean and smooth contact surface instead of a bi-directional bar design or expanded metal.

- Plate design for a clean appearance
- Standard 1" openings (other sizes can be made)
- Angled front plate to maximize debris deflection
- Mounting flanges on 2-4 sides depending on size
- Galvanized steel construction. Can be made from aluminum or stainless steel.







TR1626558 ▼

[Contact us for a Quote](#) [1]

Physical weight:

0 lb

Physical dimensions:

0 × 0 × 0 in

Dealer-only purchase:

No

Shipping method:

[Freight](#) [2]

Description:

Triangle Grate

Pipe OD:

[58"](#) [3]

Grate Opening:

16"x26"

Grade OD:

21"x31"

Opening Size:

[1"](#) [4]

Grate Depth:

[5](#) [5]

Material:

[Galvanized Steel](#) [6]

Plate Thickness:

[3/16"](#) [7]

Source URL:<https://www.haala.com/products/triangle-grates-manholes>

Links

[1] <https://www.haala.com/information-request?list=TR1626558> [2]

<https://www.haala.com/shipping-method/freight> [3]

<https://www.haala.com/manhole-side-grate-pipe-od/58> [4]

<https://www.haala.com/manhole-side-grate-opening-size/1> [5]

<https://www.haala.com/manhole-side-grate-grate-depth/5> [6]

<https://www.haala.com/manhole-side-grate-material/galvanized-steel> [7]

<https://www.haala.com/manhole-side-grate-plate-thickness/316>