



Published on *Haala Industries* (<https://www.haala.com>)

[Home](#) > Pond Skimmer Woodbury Style

---

## Pond Skimmer Woodbury Style

**Title:**

PS48WB

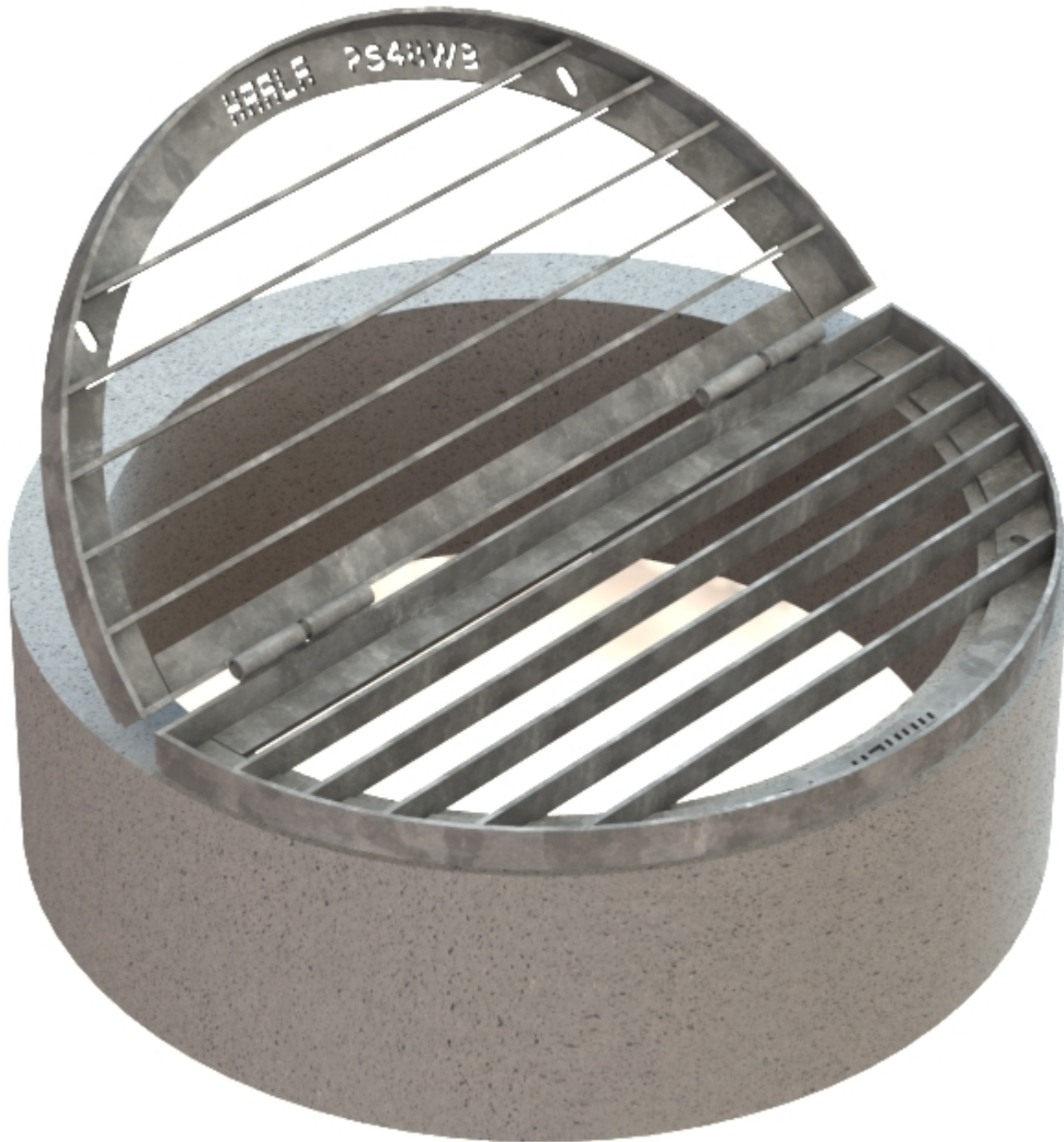
**Part No.**

PS48WB

Pond skimmers are made from 3/8"x2" flats at 4" C/C and have a fabricated 2-1/2"x3/8" angle iron outer frame. Bearing bars run parallel to the hinge joint. Grates 84" and larger have cross bars. Hinges are mounted so that the grate can be disassembled in the field.

- Integrated mounting flanges for securing grates
- Anti vortex plate can be added upon request
- Galvanized steel construction. Can be made from aluminum or stainless steel.





PS48WB ▼

[Contact us for a Quote](#) [1]

**Dealer-only purchase:**

No

**Shipping method:**

[Freight](#) [2]

**Description:**

Woodbury Style Pond Skimmer

**Pipe ID:**

48

**Grate OD:**

57

**Grate Height:**

[2-1/2"](#) [3]

**Thickness:**

[3/8"](#) [4]

**Cross Bar:**

[No](#) [5]

---

**Source URL:**<https://www.haala.com/products/pond-skimmer-woodbury-style>

**Links**

[1] <https://www.haala.com/information-request?list=PS48WB> [2]

<https://www.haala.com/shipping-method/freight> [3]

<https://www.haala.com/pond-skimmer-woodbury-style-grate-height/2-12> [4]

<https://www.haala.com/pond-skimmer-woodbury-style-thickness/38> [5]

<https://www.haala.com/pond-skimmer-woodbury-style-cross-bar/no>