



Published on Haala Industries (<https://www.haala.com>)

[Home](#) > Cone Grates Raised

Cone Grates Raised

Title:

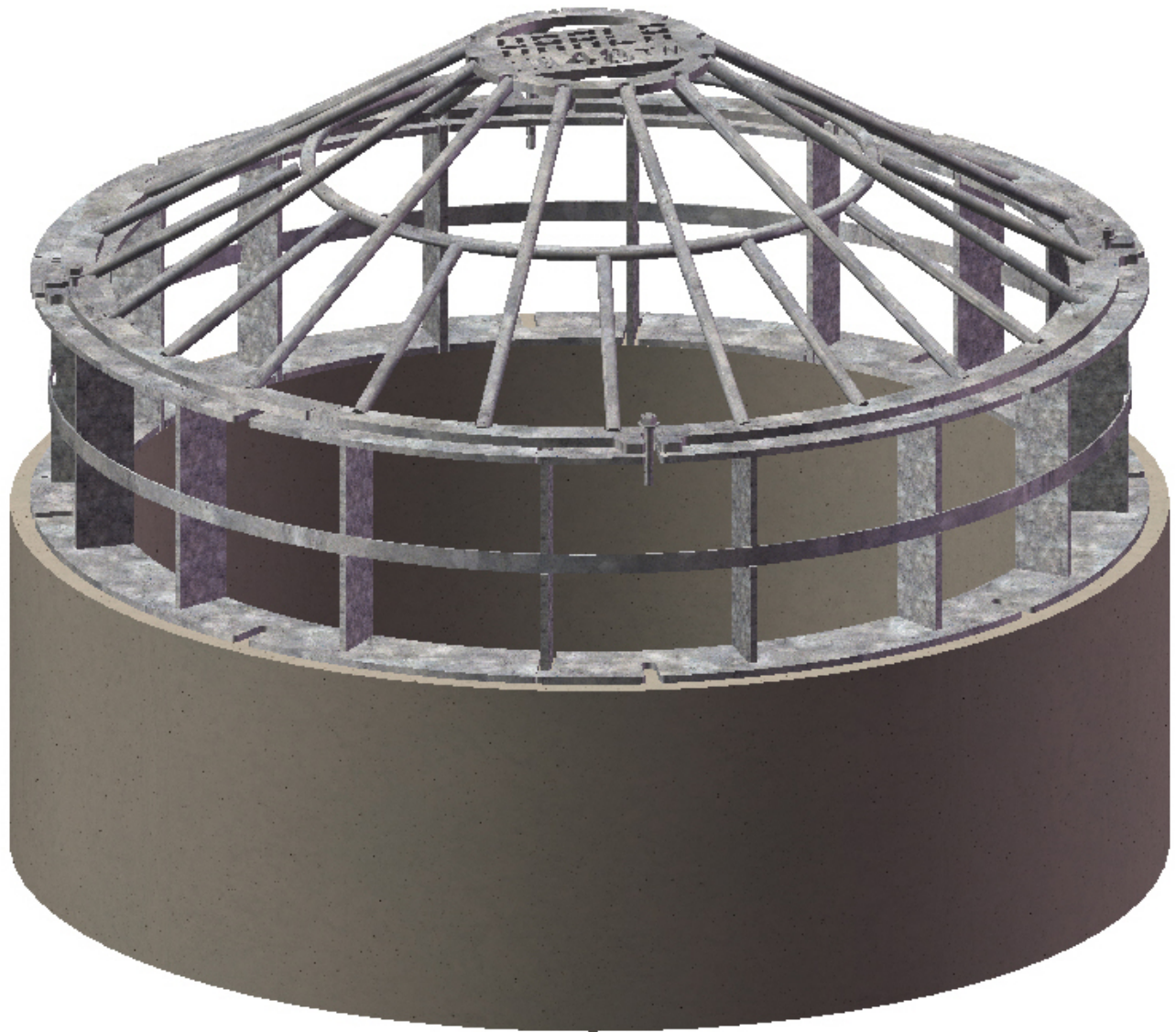
RCG24

Part No.

RCG24

Raised Cone Grates are designed to mount on top of round manhole inlet or outlet structures to keep debris from entering the storm water system. Raised grate design increases flow capacity. Grates 96" and larger are made as a two piece, bolt together design.

- Plate and bar hybrid design is both clean and cost effective
- Made from 3/8" plate with 3/4" or 1" round bars depending on grate size
- Integrated mounting flanges for securing grates
- Anti vortex plate can be added upon request
- Top cone grate is removable for access to the manhole
- Hinged and lockable access doors can be added upon request
- Galvanized steel construction. Can be made from aluminum or stainless steel.



RCG24 ▼

[Contact us for a Quote](#) [1]

Physical weight:

0 lb

Physical dimensions:

0 × 0 × 0 in

Dealer-only purchase:

No

Shipping method:

[Freight](#) [2]

Description:

Raised Cone Grate

Pipe ID:

24

Grate OD:

29

Grate Height:

[20](#) [3]

Side Max Opening:

[6 X 11](#) [4]

Mounting Slots:

[4](#) [5]

Material:

[Galvanized Steel](#) [6]

Source URL:<https://www.haala.com/products/cone-grates-raised>

Links

[1] <https://www.haala.com/information-request?list=RCG24> [2]

<https://www.haala.com/shipping-method/freight> [3]

<https://www.haala.com/raised-cone-grate-grate-height/20> [4]

<https://www.haala.com/raised-cone-grate-side-max-opening/6-x-11> [5]

<https://www.haala.com/raised-cone-grate-mounting-slots/4> [6]

<https://www.haala.com/raised-cone-grate-material/galvanized-steel>