



Published on *Haala Industries* (<https://www.haala.com>)

[Home](#) > Quick Attach Plates

Quick Attach Plates

\$196.35

Title:

QT25B

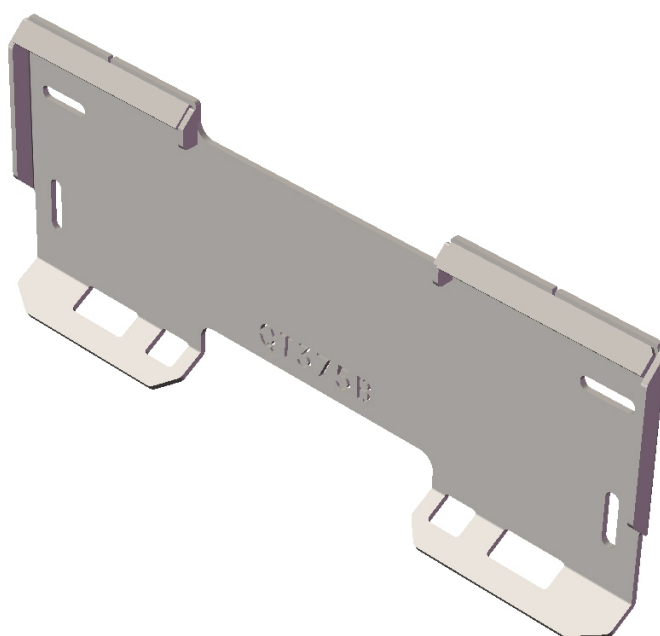
Part No.

QT25B

Use this plate to convert your old bucket, or other implement to the new style quick attach system or for making your own implement. Simply align this plate onto your implement, weld on and your done! This plate takes the trial and error out of making your implement fit your loader. Universal Quick Attach plate will fit Bobcat, Case, ASV, Gehl, John Deere, New Holland, Caterpillar and more! Cut with a CNC High Definition Plasma Table for Ultimate Precision.

Universal plates are available in 2 styles and 3 thicknesses. Style A plates have a center opening and style B plates are solid.

- Made in the USA with domestic material. Welded by AWS D1.1 certified welders.
- Fits all skid steers and compact tractors with the skid steer universal quick attach system.
- Comes bent and welded, ready to weld to your bucket, forks, tree spade, backhoe, wood splitter, etc.
- Bare metal for easy welding









[Contact us for a Quote](#) [1]

Dealer-only purchase:

No

Stock status:

Out of Stock

Free Shipping!

Type:

[Quick Attach Mount Plate](#) [2]

Style:

[No center opening](#) [3]

Thickness:

1/4"

Source URL:<https://www.haala.com/products/quick-attach-plates>

Links

[1] <https://www.haala.com/information-request?list> [2]

<https://www.haala.com/universal-quick-attach-mounting-plates-type/quick-attach-mount-plate> [3]

<https://www.haala.com/universal-quick-attach-mounting-plates-style/no-center-opening>