



Published on *Haala Industries* (<https://www.haala.com>)

[Home](#) > Del Dot Pipe Guards

---

## Del Dot Pipe Guards

**Title:**

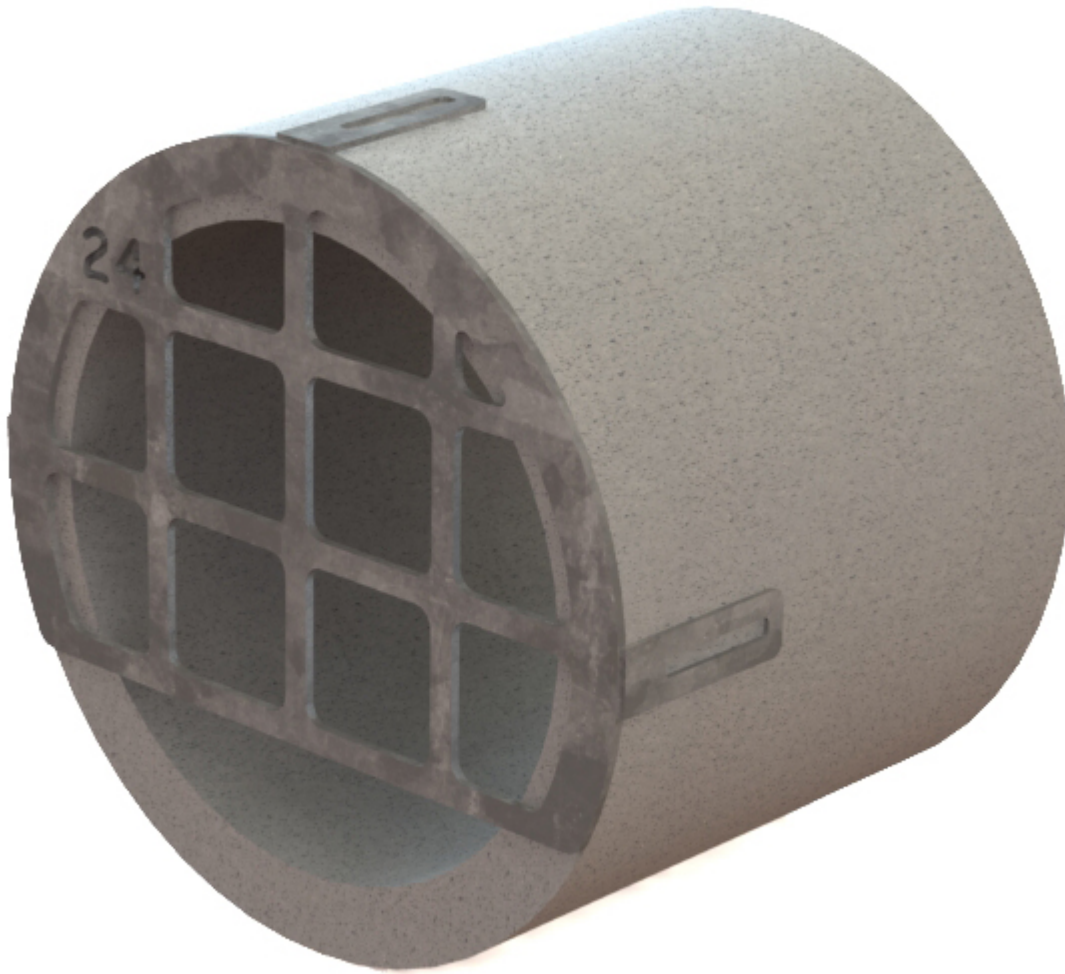
OSOB12

**Part No.**

OSOB12

DEL DOT Outlet Screens are designed to mount on the end of RCP to prevent medium and large debris from passing into the pipe system and also prevents access. Grates have an open bottom design so as not to restrict flow and to minimize the build up of smaller debris.

- Plate design for a clean appearance
- Standard 6" openings in screen
- Mounting tabs for through bolt connections
- Galvanized steel construction. Can be made from aluminum or stainless steel.



OSOB12 ▼

[Contact us for a Quote](#) [1]

**Physical weight:**

0 lb

**Physical dimensions:**

0 × 0 × 0 in

**Dealer-only purchase:**

No

**Shipping method:**

[Freight](#) [2]

**Description:**

Outlet Screen Open Bottom

**Pipe ID:**

[12](#) [3]

**Grate OD:**

16

**Opening Size:**

6"

**Material:**

[Galvanized Steel](#) [4]

---

**Source URL:**<https://www.haala.com/products/del-dot-pipe-guards>

#### **Links**

[1] <https://www.haala.com/information-request?list=OSOB12> [2]

<https://www.haala.com/shipping-method/freight> [3]

<https://www.haala.com/del-dot-pipe-guards-pipe-id/12> [4]

<https://www.haala.com/del-dot-pipe-guards-material/galvanized-steel>