



Published on *Haala Industries* (<https://www.haala.com>)

[Home](#) > Safety Grates

---

## Safety Grates

\$733.95

**Title:**

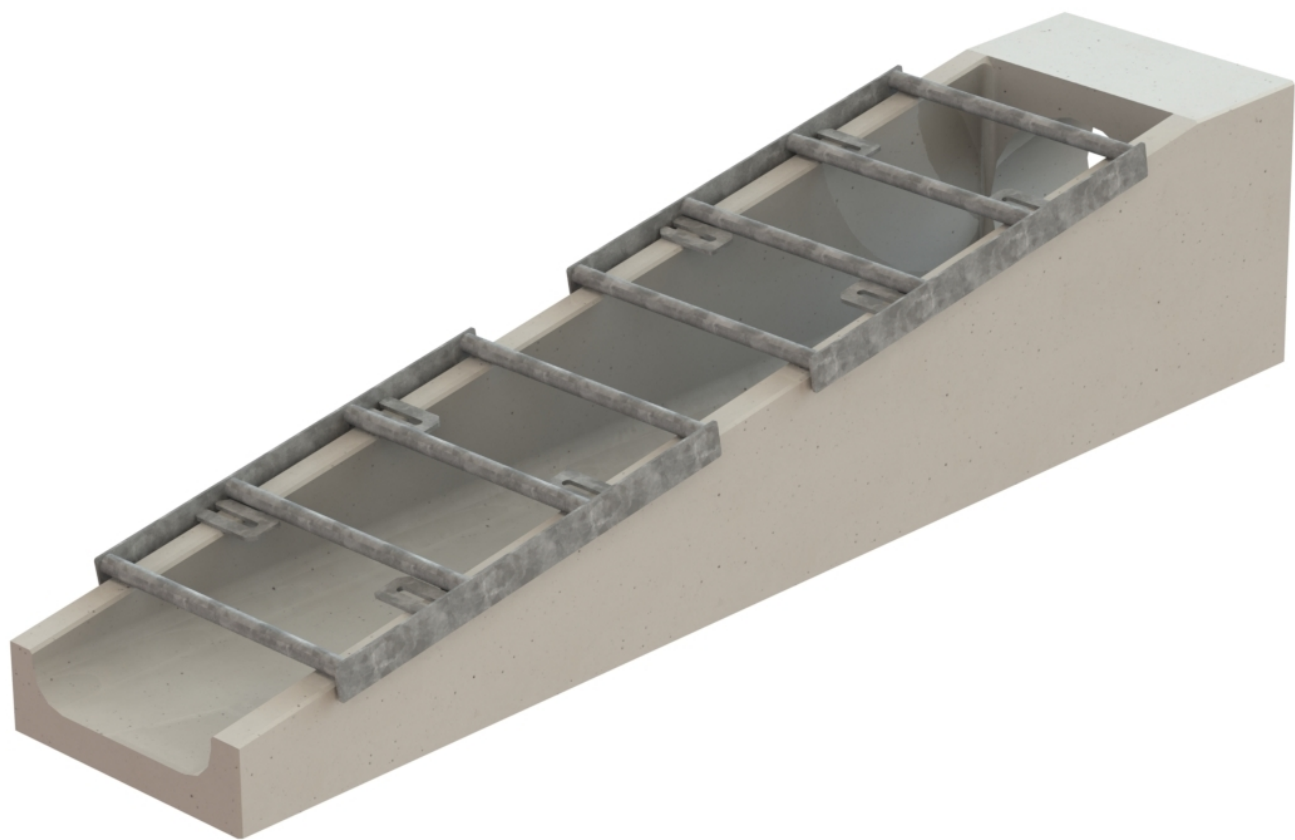
SG1241A-1

**Part No.**

SG1241A-1

Safety Grates are designed to cover the sloped end section of an inlet or outlet pipe and prevent large debris from passing through while also restricting access to the pipe system. Designed around MN DOT Standard Plate 3022C, design option 1 for squared end sections. Grates are offered with three options for mounting: Top mount tabs, swinging side mount tabs or a dropped end bar.

- Solid bar design for durability and long life
- 6" Center to Center Spacing between 1 1/4" Cross Bars
- 12" Center to Center Spacing between 1 1/2" Cross Bars
- Galvanized steel construction. Can be made from aluminum or stainless steel.



SG1241A-1 ▼

Add to cart

**Physical weight:**

0 lb

**Related products:**

[\*\*Safety Grates Royal Style \[1\]\*\*](#)

SG1841R ▼

[Contact us for a Quote](#) [2]

**Physical dimensions:**

0 × 0 × 0 in

**Dealer-only purchase:**

No

**Shipping method:**

[Freight](#) [3]

**Description:**

Safety Grate 4:1

**Size:**

[12](#) [4]

**Slope:**

[4:1](#) [5]

**Bar Spacing:**

[12](#) [6]

**Thickness:**

[1-1/2"](#) [7]

**Material:**

[Galvanized Steel](#) [8]

---

**Source URL:**<https://www.haala.com/products/safety-grates>

**Links**

[1] <https://www.haala.com/products/safety-grates-royal-style> [2]

<https://www.haala.com/information-request?list=SG1841R> [3]

<https://www.haala.com/shipping-method/freight> [4] <https://www.haala.com/safety-grates-size/12> [5]

<https://www.haala.com/safety-grates-slope/41> [6] <https://www.haala.com/safety-grates-bar-spacing/12>

[7] <https://www.haala.com/safety-grates-thickness/1-12> [8]

<https://www.haala.com/safety-grates-material/galvanized-steel>