



Published on Haala Industries (<https://www.haala.com>)

[Home](#) > Safety Grates CMP

Safety Grates CMP

Title:

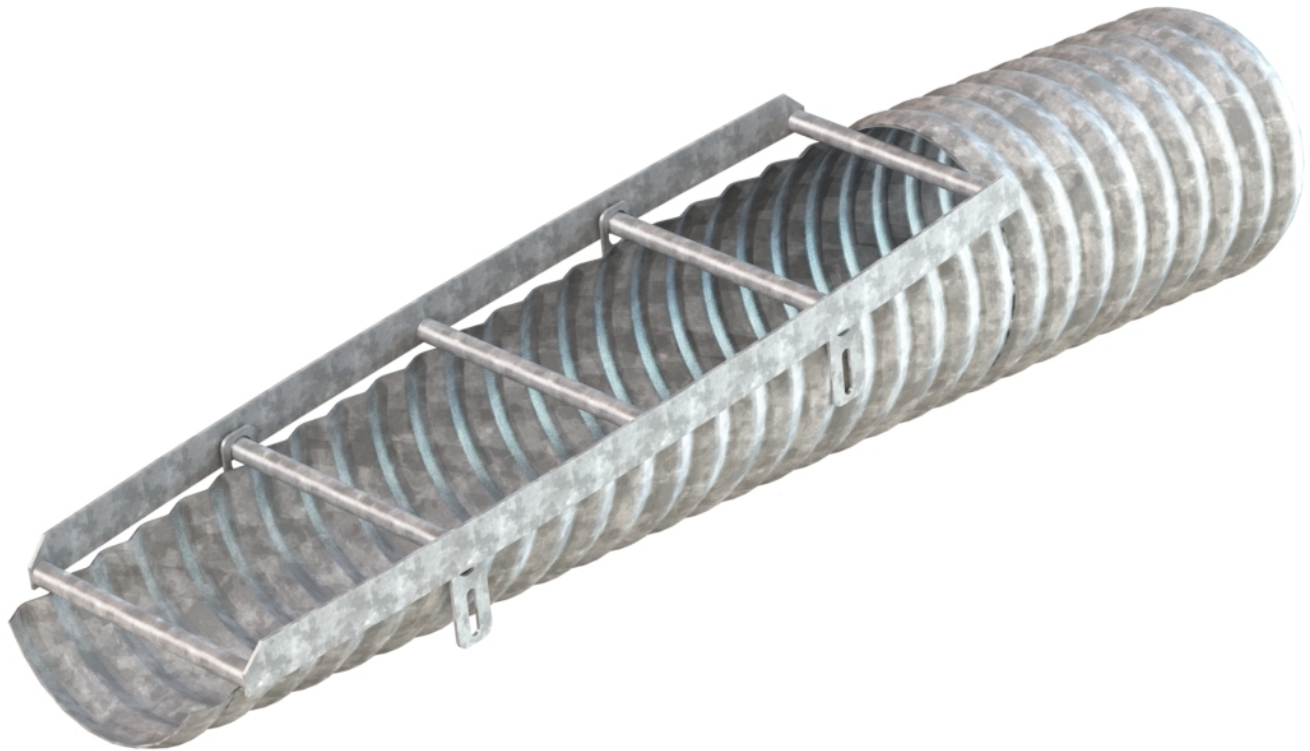
SG18413128

Part No.

SG18413128

Safety Grates are designed to cover sloped round pipe end section of an inlet or outlet pipe and prevent large debris from passing through while also restricting access to the pipe system. Grates are designed around MN DOT Standard Plate 3128H (for metal pipe). Grates are offered with two options for mounting: Swinging side mount tabs or a dropped end bar.

- Solid bar design for durability and long life
- Typical bar c/c is 12"-18" one direction
- Galvanized steel construction. Can be made from aluminum or stainless steel.



SG12613128 ▼

[Contact us for a Quote](#) [1]

Dealer-only purchase:

No

New until:

Wednesday, December 5, 2018

Promotion:

Wednesday, December 5, 2018

Size:

[18"](#) [2]

Slope:

[4:1](#) [3]

Material:

[Galvanized Steel](#) [4]

Source URL:<https://www.haala.com/products/safety-grates-cmp>

Links

[1] <https://www.haala.com/information-request?list=SG18413128> [2]

<https://www.haala.com/safety-apron-grates-cmp-size/18> [3]

<https://www.haala.com/safety-apron-grates-cmp-slope/41> [4]

<https://www.haala.com/safety-apron-grates-cmp-material/galvanized-steel>