



Published on *Haala Industries* (<https://www.haala.com>)

[Home](#) > Heavy Duty Couplers

---

## Heavy Duty Couplers

**Title:**

BC12A

**Part No.**

BC12A

Heavy Duty Couplers for large boxes or bridges.

Type A Couplers are unflanged

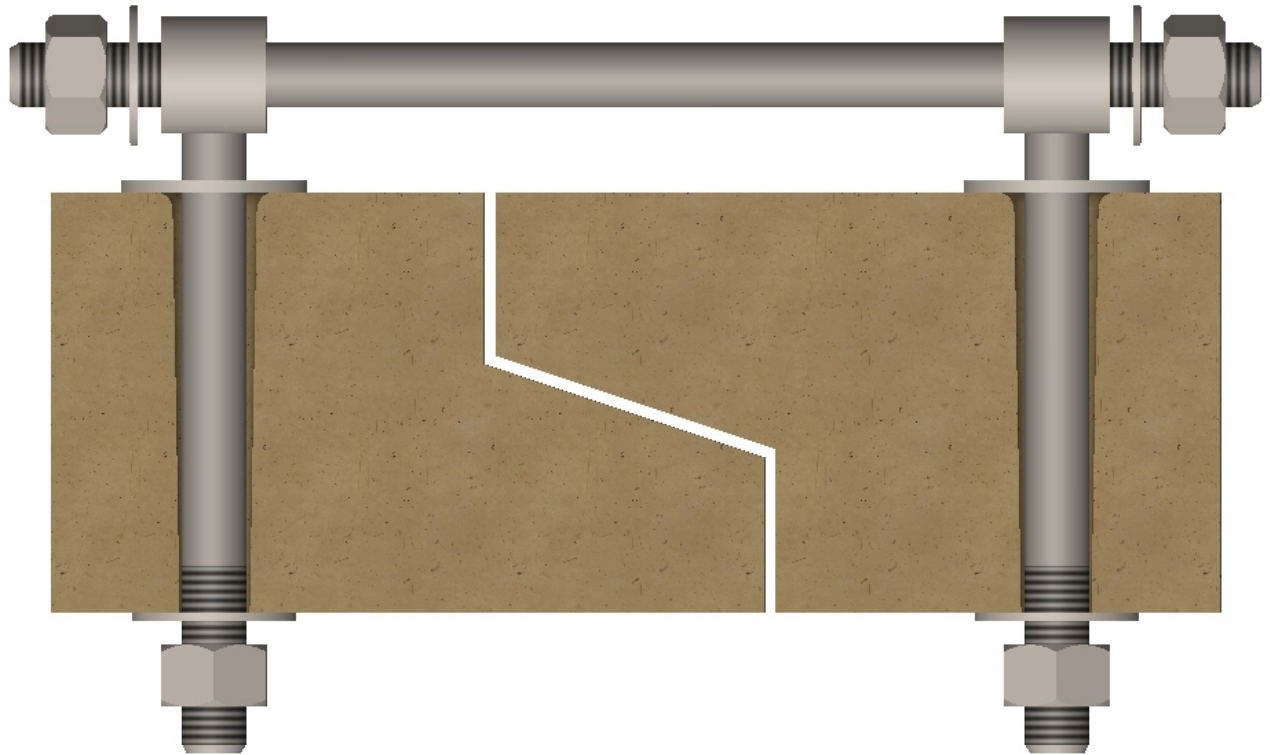
Type B Couplers are flanged (washer welded below coupler head)

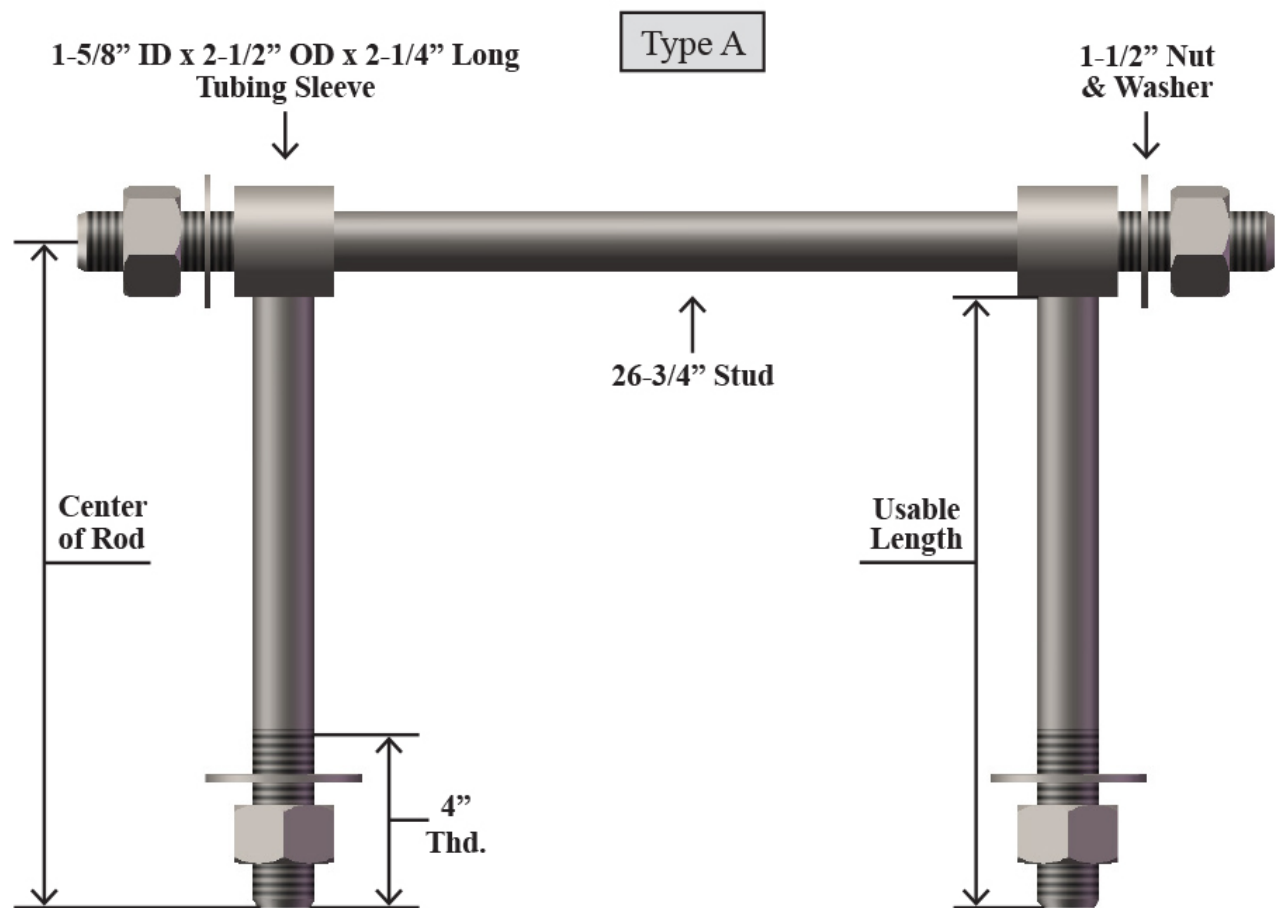
Can be built to your specifications

Rod and couplers are hot dip galvanized in accordance with the requirements of ASTM F2329.

Each assembly includes the following fasteners: (4) Hex Nuts, ASTM A563 and (4) Washers, both hot dip galvanized in accordance with the requirements of ASTM F2329.

Made of import and domestic material. Certifications are available upon request.





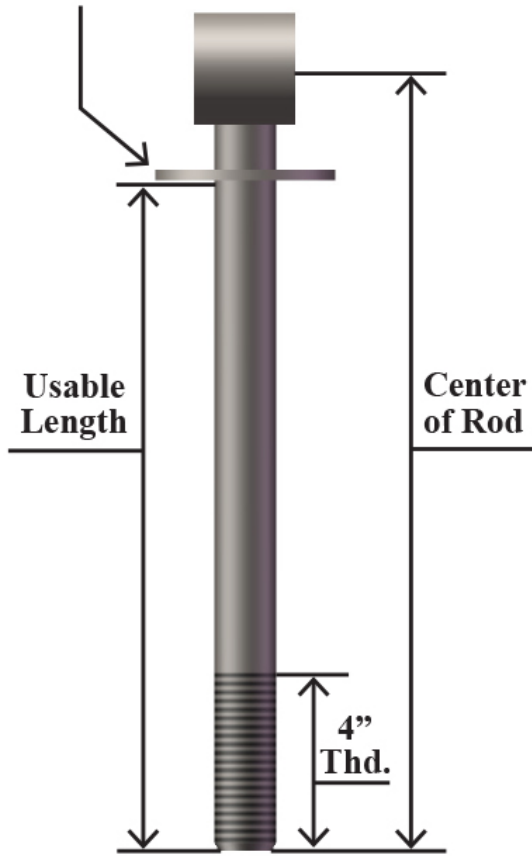
Type B

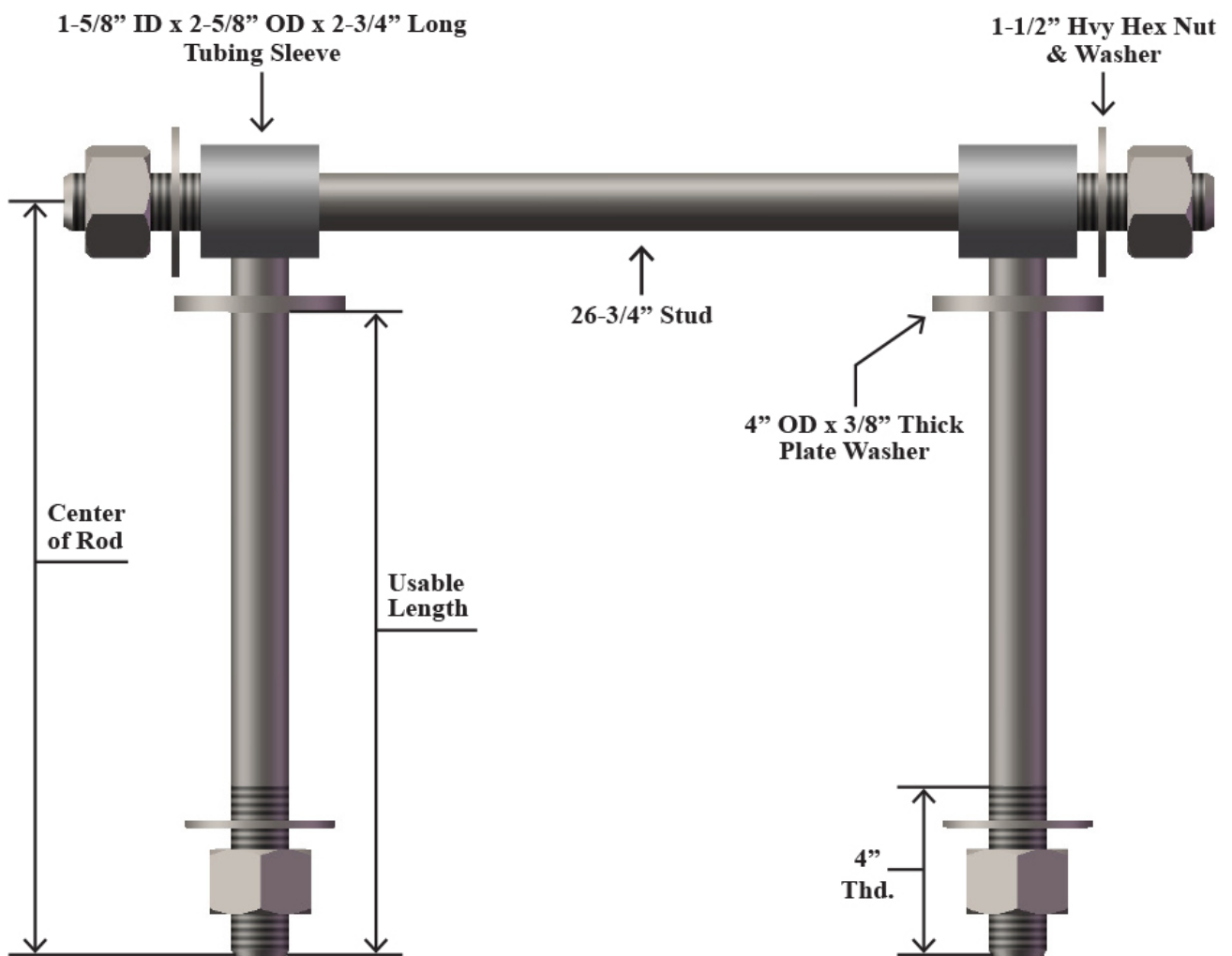
4" OD  
x 1/4" Thick  
Plate Washer

Usable  
Length

Center  
of Rod

4"  
Thd.







BC12A ▼

[Contact us for a Quote](#) [1]

**Physical weight:**

0 lb

**Physical dimensions:**

0 × 0 × 0 in

**Dealer-only purchase:**

No

**Shipping method:**

[Freight](#) [2]

**Usable Leg Length:**

[10 5/8"](#) [3]

**Center of Rod:**

[12"](#) [4]

**Rod Angle:**

[90](#) [5]

**Thread Length:**

[4"](#) [6]

**Suggested Wall Thickness:**

[8"](#) [7]

---

**Source URL:**<https://www.haala.com/products/heavy-duty-couplers>

**Links**

[1] <https://www.haala.com/information-request?list=BC12A> [2]

<https://www.haala.com/shipping-method/freight> [3]

<https://www.haala.com/heavy-duty-coupler-burlington-northern-railroad-usable-leg-length/10-58> [4]

<https://www.haala.com/heavy-duty-coupler-burlington-northern-railroad-size/1-12-x-12> [5]

<https://www.haala.com/heavy-duty-coupler-burlington-northern-railroad-rod-angle/90> [6]

<https://www.haala.com/heavy-duty-coupler-burlington-northern-railroad-thread-length/4> [7]

<https://www.haala.com/heavy-duty-coupler-burlington-northern-railroad-suggested-wall-thickness/8>