



Published on *Haala Industries* (<https://www.haala.com>)

[Home](#) > Lift Bars

Lift Bars

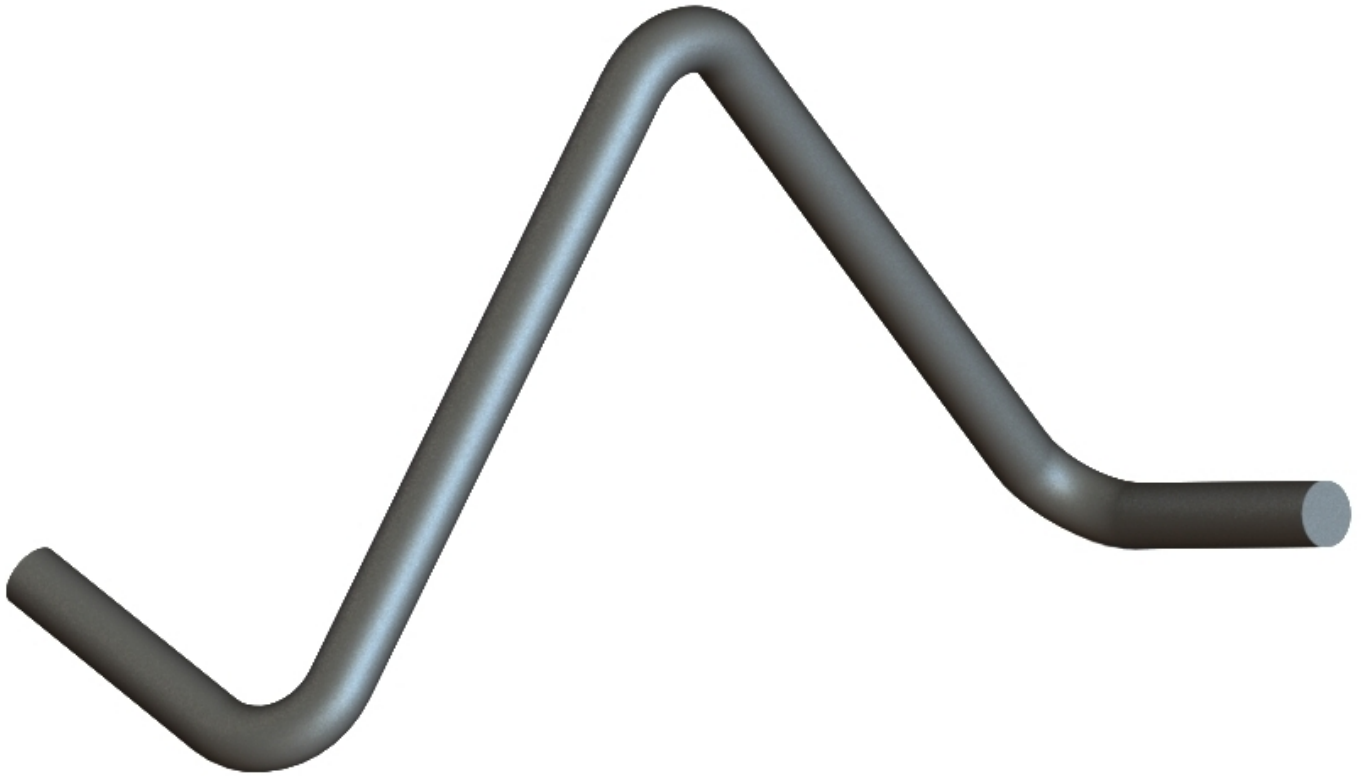
Title:

LB2536P

Part No.

LB2536P

- Lift bars are designed to be cast into concrete for lifting slabs or structures.
- Can be made to your specifications upon request and design approval.
- Haala Industries can fabricate lift bars in diameters from 1/4" to 1-1/2".



LB3819P ▼

[Contact us for a Quote](#) [1]

Unit:

Min 500 Pc Order. 500 Pcs Per Pallet.

Documents:

 [Test report LB3819](#) [2]

 [Test report CP118](#) [3]

Dealer-only purchase:

Yes

New until:

Thursday, February 4, 2021

Promotion:

Thursday, February 4, 2021

Description:

Min 500 Pc Order. 500 Pcs Per Pallet.

Thickness:

[.252"](#) [4]

Total Width:

[23.00"](#) [5]

Height:

[9.00"](#) [6]

SWL:

[2800](#) [7]

Source URL:<https://www.haala.com/products/lift-bars>

Links

[1] <https://www.haala.com/information-request?list=LB2536P> [2]

<https://www.haala.com/sites/default/files/product-documents/Report%20LB3819%20for%20Website.pdf>

[3] <https://www.haala.com/sites/default/files/product-documents/Report%20CP118.pdf> [4]

<https://www.haala.com/lift-bars-thickness/0252> [5] <https://www.haala.com/lift-bars-total-width/2300> [6]

<https://www.haala.com/lift-bars-height/9> [7] <https://www.haala.com/lift-bars-swl/3000>