



Published on Haala Industries (<https://www.haala.com>)

[Home](#) > Lift Plates

Lift Plates

Title:

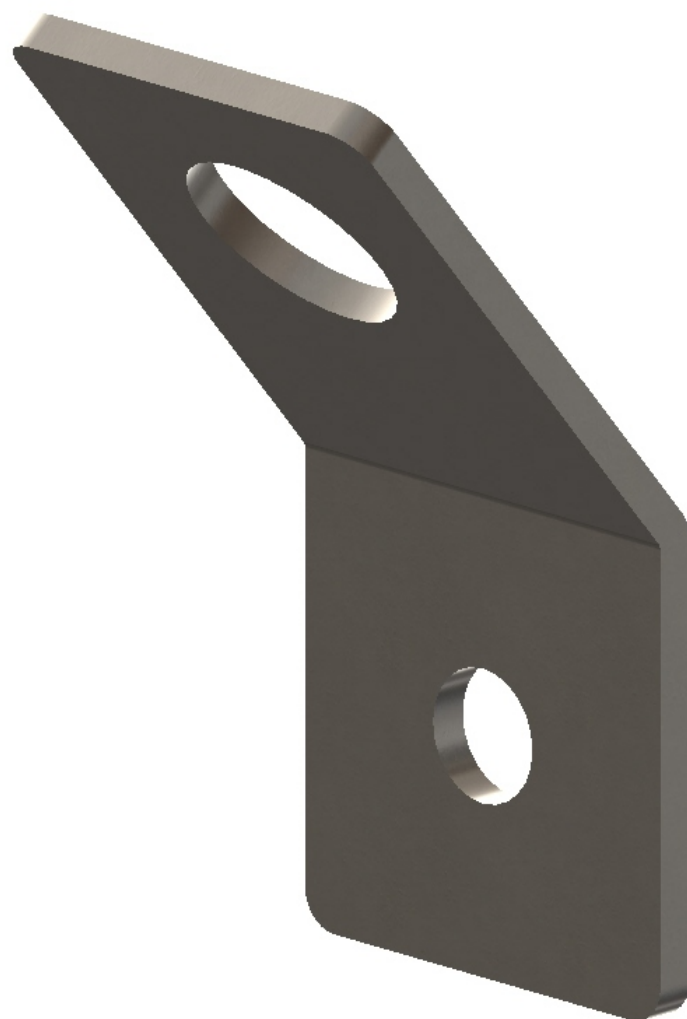
3803

Part No.

3803

Lift plates are made to bolt onto the concrete structure so they can be removed if desired. Standard plates are made from mild steel but are available in stainless steel.

******Please consider the breaking strength of the bolt and concrete when using this plate.
During testing the bolt broke before the plate.******





[Contact us for a Quote](#) [1]

Physical weight:

0 lb

Physical dimensions:

0 × 0 × 0 in

Dealer-only purchase:

No

Shipping method:

[Freight](#) [2]

Thickness:

[3/8"](#) [3]

Width:

[3](#) [4]

Mounting Hole:

[3/4"](#) [5]

Lifting Hole:

[1-1/2" X 2"](#) [6]

Horizontal Length:

[7-1/2"](#) [7]

Package Qty:

10

Source URL:<https://www.haala.com/products/lift-plates>

Links

[1] <https://www.haala.com/information-request?list=3803> [2]

<https://www.haala.com/shipping-method/freight> [3] <https://www.haala.com/lift-plates-thickness/38> [4]

<https://www.haala.com/lift-plates-width/3> [5] <https://www.haala.com/lift-plates-mounting-hole/34> [6]

<https://www.haala.com/lift-plates-lifting-hole/1-12-x-2> [7]

<https://www.haala.com/lift-plates-horizontal-length/7-12>